

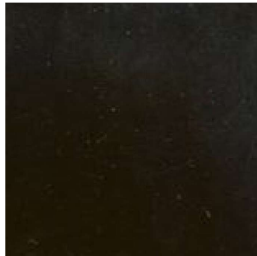
RAW BOARD

FINISHED BOARD



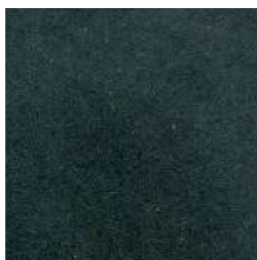
Grey

Grey



Black

Black



Blue

Blue



Green

Green

COMPOSITION AND MANUFACTURE

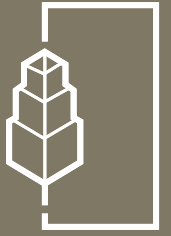
Valchromat® is a wood fibre board coloured throughout. The wood is sourced from forest waste, residue from timber mills and recycled pine. The manufacturing process is very environmentally friendly and the production site has zero carbon emissions. During manufacture, organic dyes are added along with a specifically developed binding resin to ensure exceptional physical-mechanical characteristics as well as a natural appearance. Valchromat® is classified E1 (very low formaldehyde) and has been approved by the British Standards Association for the safe use in the manufacture of children's toys. Rigorous internal standards for quality control and eco-friendly production practices apply to ensure that Valchromat® remains a unique, high quality product.

COLOURS

Valchromat is available in 8 standard colours. The colours are controlled during manufacture according to CIELab norms to allow standardisation according to internal tolerances. Testing according to British standards 1006 (24 hours exposed in a solarbox) prove a good colour resistance.

FINISHING

Valchromat® has been conceived to accept all kinds of finishes - wax, oil, lacquer, varnish, paint - but it can also be used in its natural state. It's a board with great aesthetic versatility.



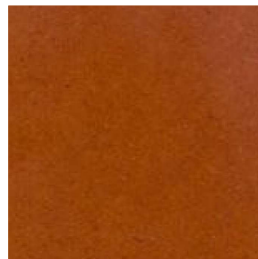
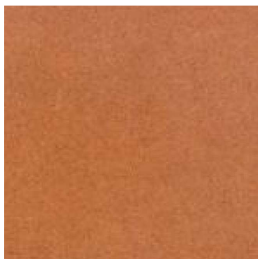
RAW BOARD

FINISHED BOARD



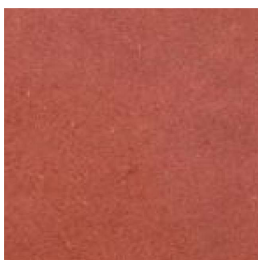
Yellow

Yellow



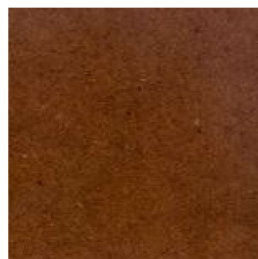
Orange

Orange



Red

Red



Brown

Brown

ADVANTAGES

Beside its unique appearance, Valchromat® allows several easier solutions for use and assembly. Because of its physical-mechanical properties, considerable time and money saving come from smooth machining and easy finishing. No edging is required. Being moisture and UV resistant, non toxic and eco-friendly, the possibilities for use are endless.

BOARD SIZES

Valchromat® is available in 8mm,16mm, 22mm and 30mm in all 8 colours except Grey and Orange which are not available in 22mm. Board dimensions are 2500mm x 1850mm.

ENVIRONMENTAL RESPONSIBILITY

Valchromat® is very serious about its environmental responsibility. The production site has a zero carbon emission. Capital has been invested to ensure that the manufacturing process involves full waste recycling, no toxic fumes and dry process production, ie no waste water. A heat recovery system, which is bio fuel run has replaced the old steam boiler to produce all the required energy. We aim to annul all emissions caused by our industrial activity, ie forklifts, company cars and trucks. This is being done by the implementation of various forestry projects. We are committed to continuously improving our performance to ensure the sustainability of natural resources.

Due to the fact that Valchromat® is made up from natural fibres and eco-friendly sustainable dyes, colour shades may vary slightly between batches of Valchromat®. However, variances remain within acceptable parameters according to the CIELab norms allied to "Datacolours" Software. Small brown chips are visible at random across the board adding to Valchromats® unique look. Tonal variance will also occur with different finishing application. Please make sure you have actual Valchromat® samples for accurate colour portrayal.

